



JBoss Drools / BRMS

JBoss Teiid / Enterprise Data Services

May 2011
Joel Tosi
Senior Solutions Architect
jtosi@redhat.com

Agenda

Talk

Look at some 'code' / demo

Ask / Answer some questions



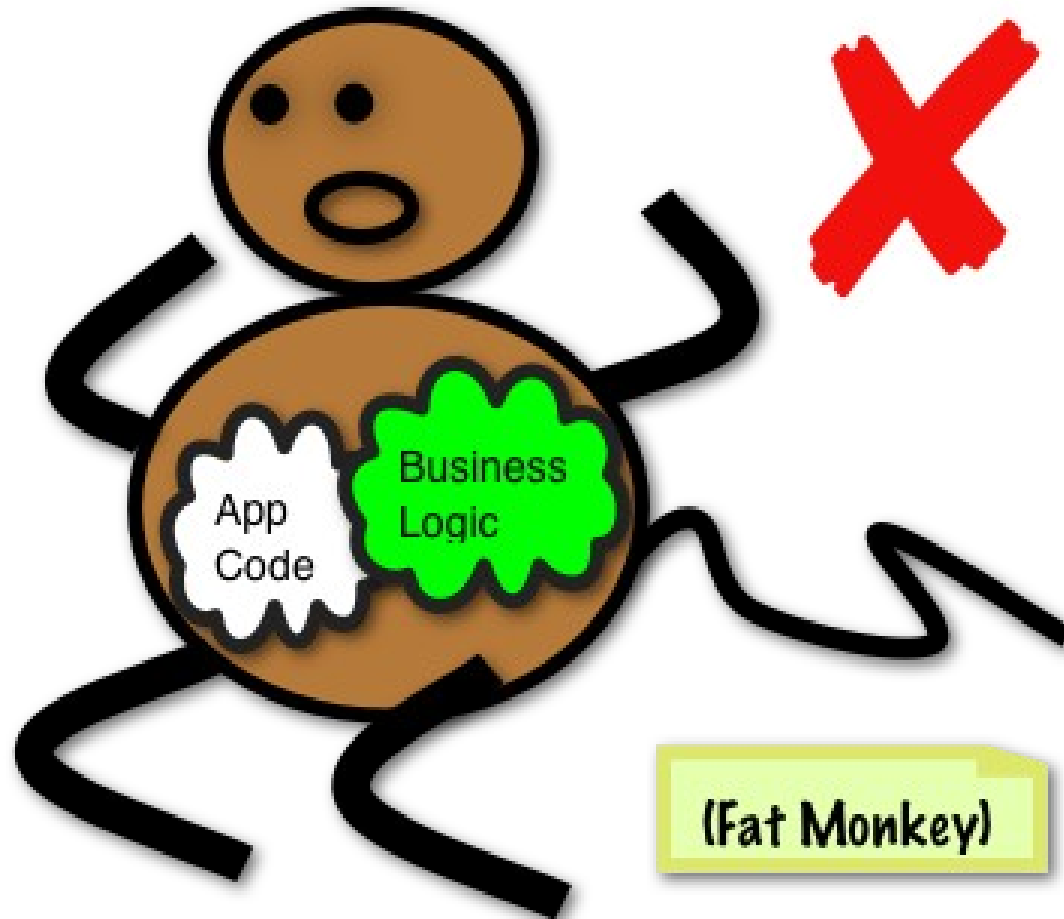


JBoss Drools / BRMS

Tell me about Rules



But developers write code ...



What is this rules engine



```
rule "XYZ"  
when  
    <conditions>  
then  
    <actions>
```



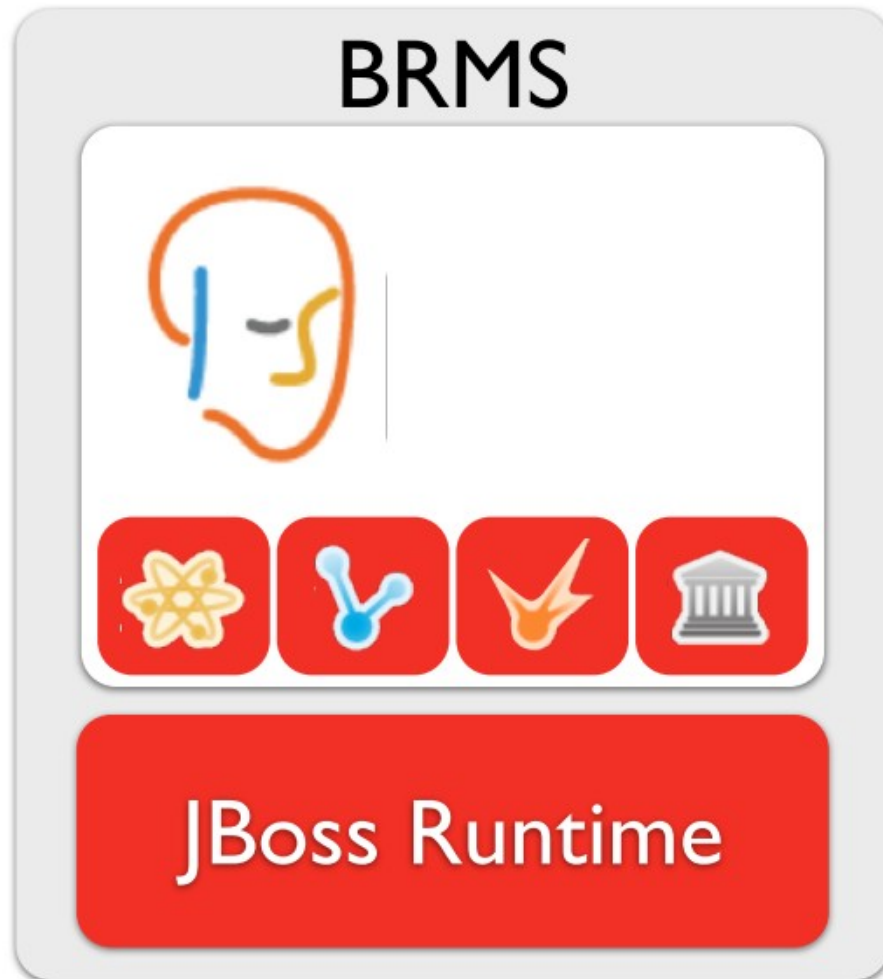
What is Drools?



-  Drools Guvnor (Business Rules Manager)
-  Drools Expert (rule engine)
-  jBPM 5 (process/workflow)
-  Drools Fusion (event processing/temporal reasoning)
-  Drools Planner (automated planning)



What is JBoss BRMS?



Integrated

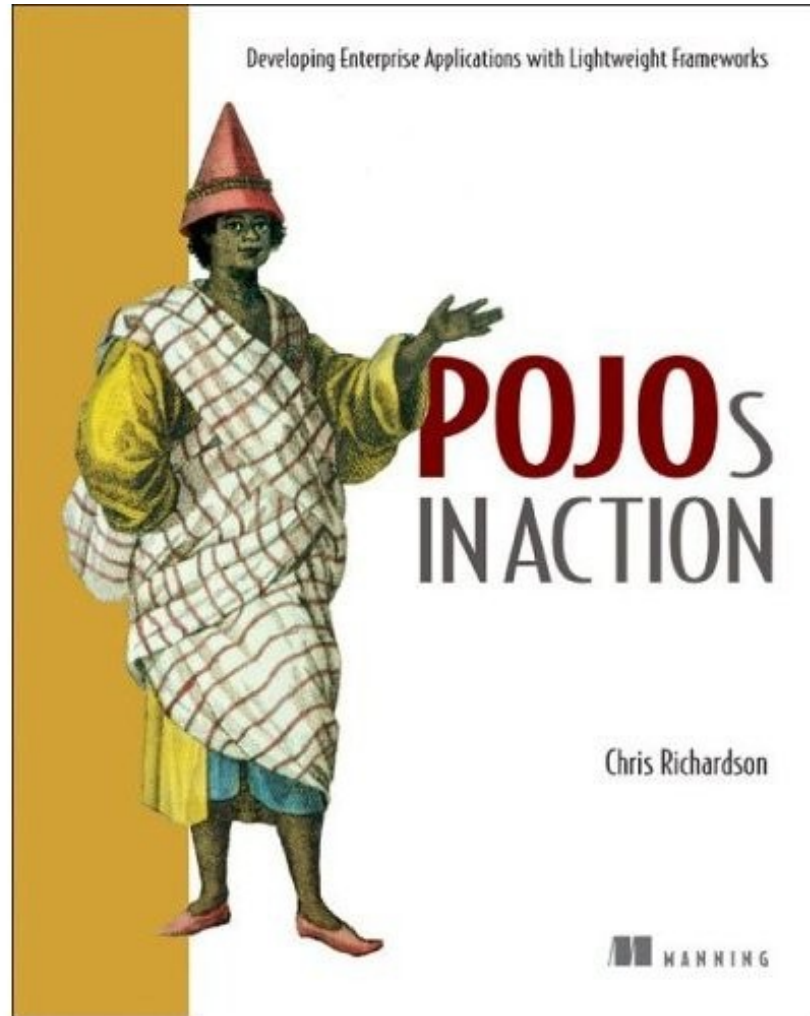
Q/A Process

Industry-Leading Support

Multi-Year Errata Policy



Facts



Rules



Creating Rules

The screenshot displays the JBoss BRMS web interface in Mozilla Firefox. The browser title is "JBoss BRMS - Mozilla Firefox". The interface includes a navigation pane on the left, a search bar at the top, and a main workspace for editing a business rule.

Navigation Pane:

- Assets
- Packages
- Create New
- insurance
 - Business rule assets
 - Technical rule assets
 - Functions
 - DSL configurations
 - Model
 - Rule Flows
 - Enumerations
 - Test Scenarios
 - XML, Properties
 - Other assets, documentation
- mortgages
- order_processing
- QA
- Package snapshots
- Administration

Search Bar: Find Business rule asset Safe Youth

Rule Editor:

- Save changes | Copy | Archive | Change status | Status: [Draft]
- WHEN
 - Driver
 - age: greater than or equal to 18 and less than (or equal to) 24
 - location/Risk-Profile: is equal to Low
 - priorClaims: is equal to 0
 - Policy [policy]
 - type: is equal to COMPREHENSIVE
- THEN
 - Set value of policy basePrice 455
- (options)

Footer: View source | Validate

Driver's age between 18 and 24 inclusive, with a low risk profile, no prior claims and requesting a comprehensive policy

Close all items



Web Decision Table Editor

JBoss BRMS - Mozilla Firefox

File Edit View History Bookmarks Tools Help

Welcome: admin [Sign Out]

Navigate

- Assets
- Packages
- Create New
- Packages
 - insurance
 - Business rule assets
 - Technical rule assets
 - Functions
 - DSL configurations
 - Model
 - Rule Flows
 - Enumerations
 - Test Scenarios
 - XML, Properties
 - Other assets, documentation
 - mortgages
 - Business rule assets
 - Technical rule assets
 - Functions
 - DSL configurations
 - Model
 - Rule Flows
 - Enumerations
 - Test Scenarios
 - XML, Properties
- QA
- Package snapshots
- Administration

Find Pricing loans

Save changes

Decision table

Modify...

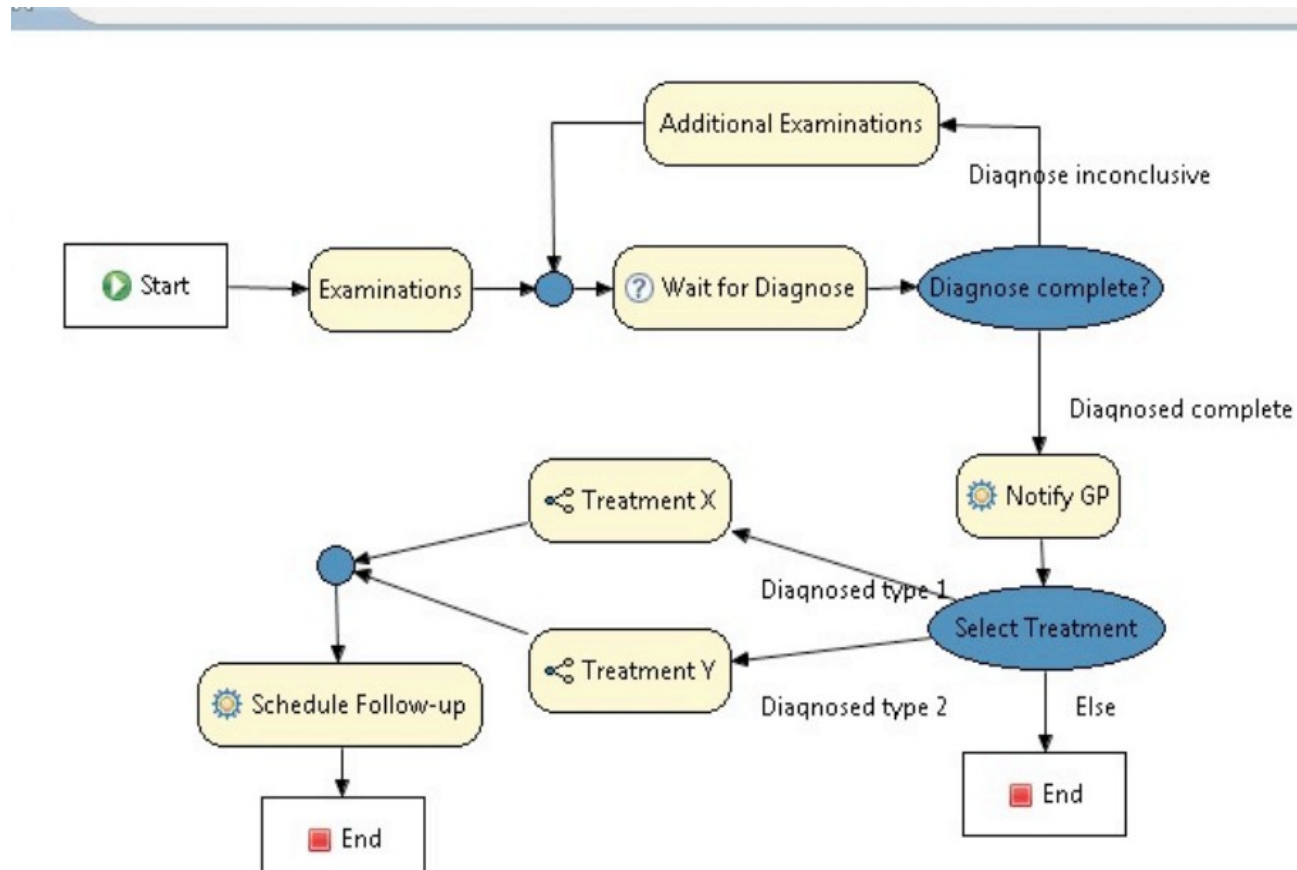
	Des	amount min	amount max	period	income	deposit max	Loan approved	LMI
income: Asset (1 Item)								
3		131000	200000	30	Asset	20000	true	0
income: Job (2 Items)								
1		10000	100000	20	Job	2000	true	0
2		100001	130000	20	Job	3000	true	10

Close all items



Rule Flow (jBPM5)

- ▶ Start
- End
- ▭ RuleFlowGroup
- ⚡ Split
- ⚡ Join
- ⊙ Event Wait
- 🔗 SubFlow
- ⚙️ Action
- 🕒 Timer
- ⚠️ Fault
- ★ Event
- 👤 Human Task
- 📁 Composite
- 📁 For Each



Fusion (CEP)

Complex Event Processing

Real Time Events

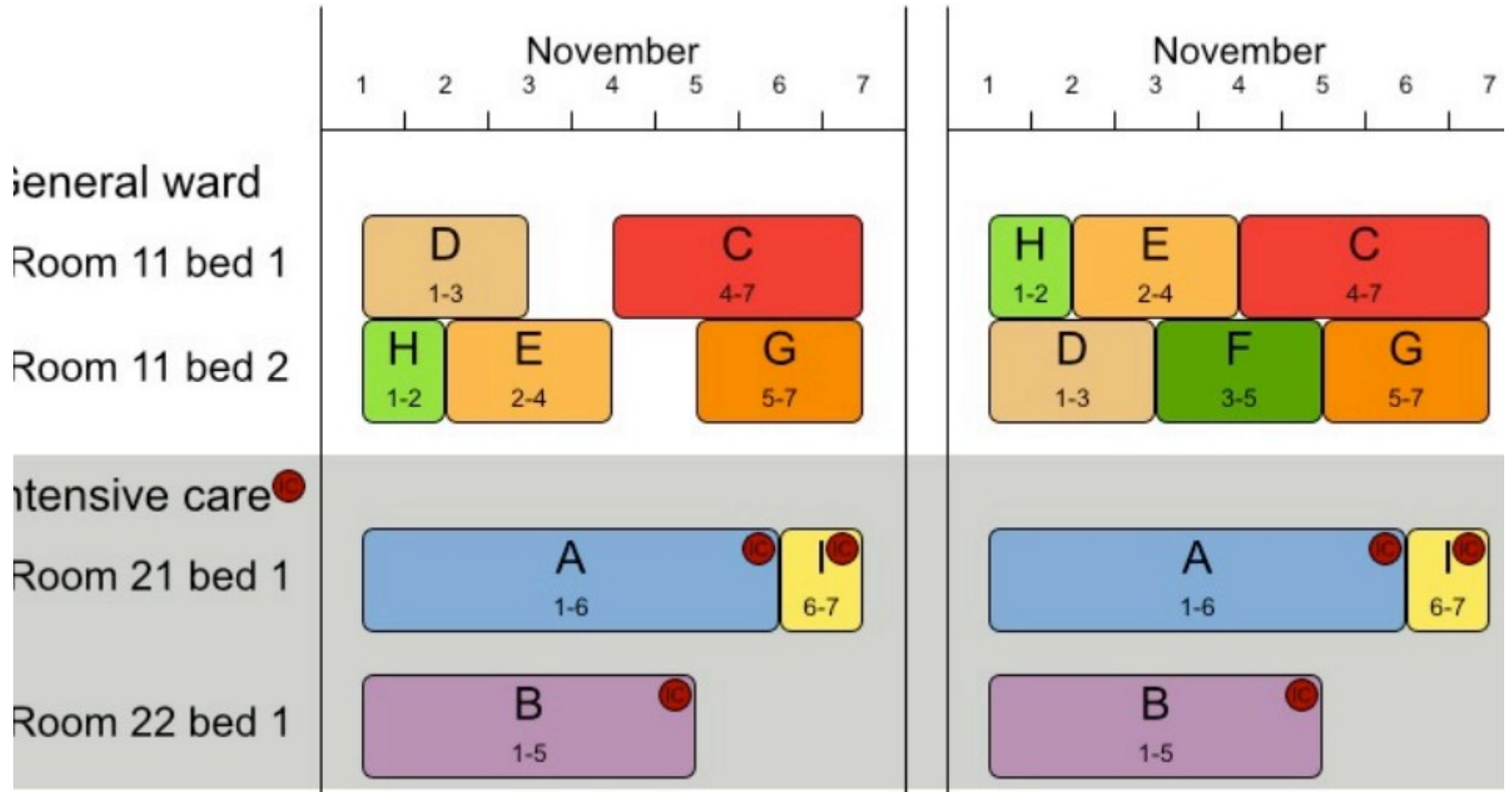
Sliding Windows

Not events

	Point-Point	Point-Interval	Interval-Interval
A before B			
A meets B			
A overlaps B			
A finishes B			
A includes B			
A starts B			
A coincides B			



Planner



jtosi@redhat.com
@joeltosi



Questions?

On to demo

Give it a try – easy ways to start

Drools - <http://www.jboss.org/drools>

Great collection of information - <http://people.redhat.com/~rploski/brms/>

Demo - <https://github.com/Salaboy/emergency-service-drools-app/wiki>

Explore, learn, give feedback!





JBoss Teiid / Enterprise Data Services

Quick Survey



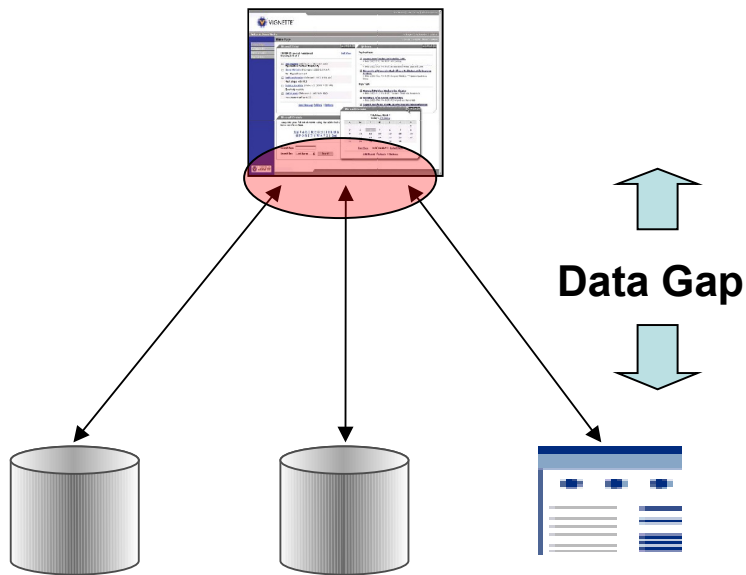
Data Challenges

*Tremendous value in existing information assets, but...
Time consuming and costly to implement new applications
that leverage this information*



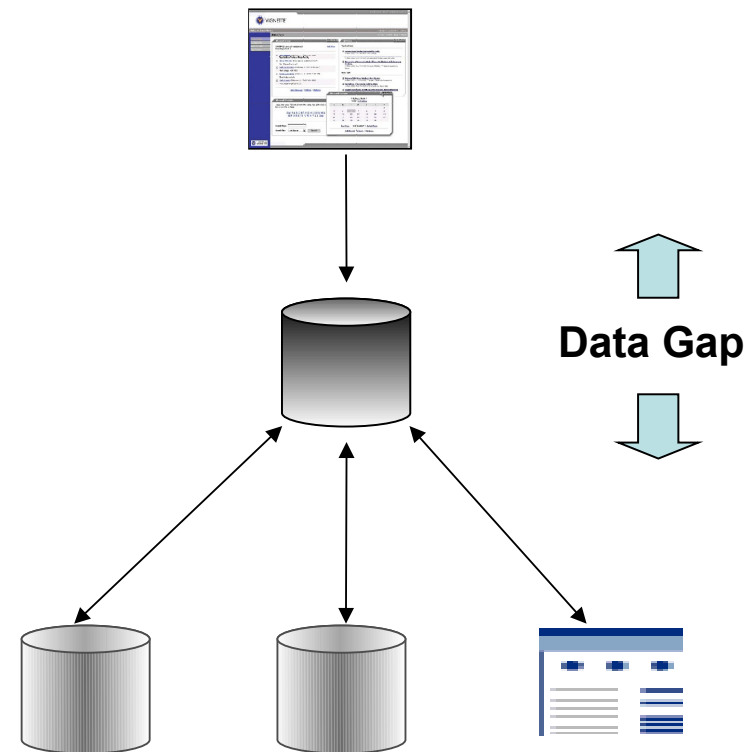
Data Challenges – Alternatives

Hard Code



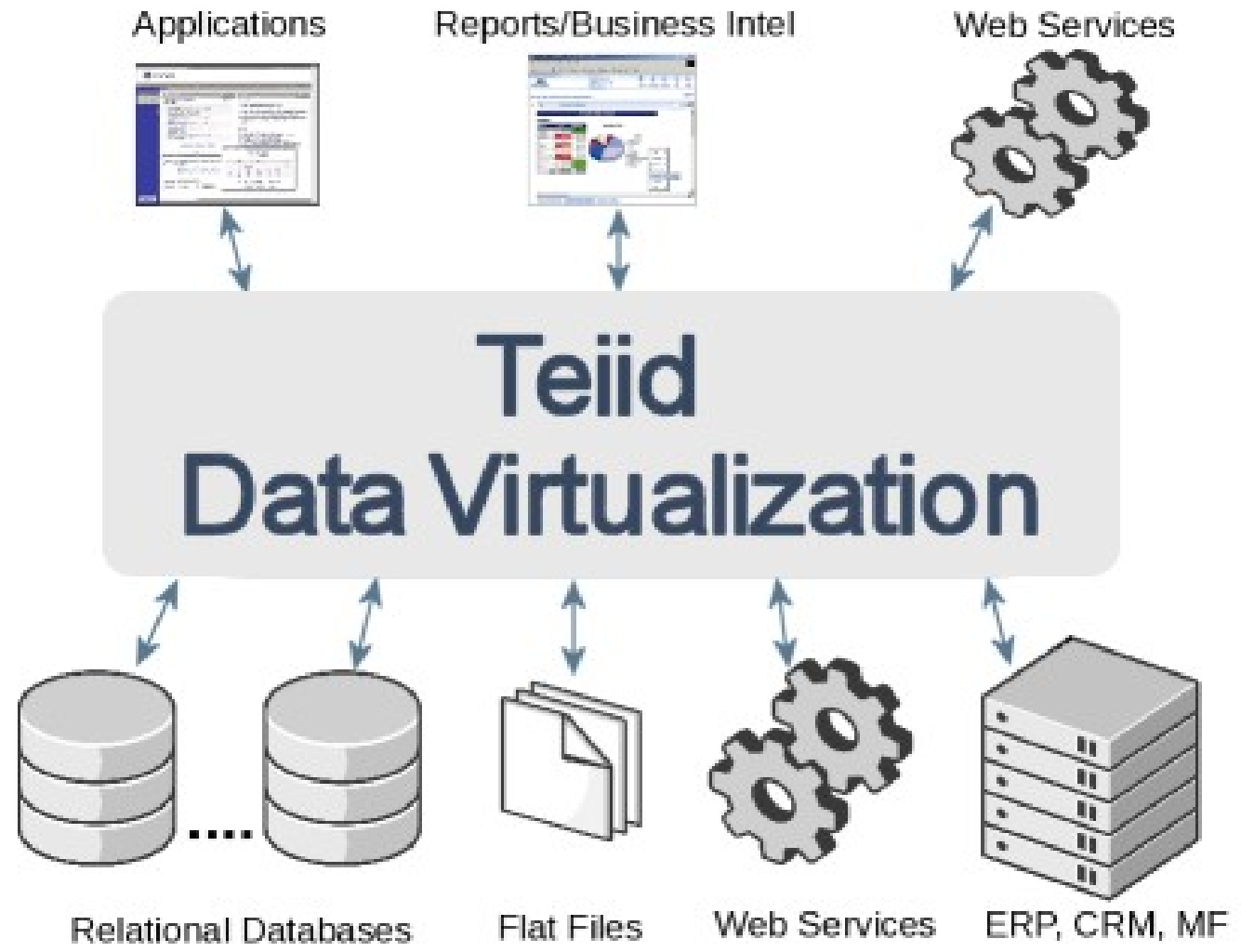
- Time consuming – difficult/costly
- No re-use of data logic
- Any changes break the application

Replicate/Data Mart

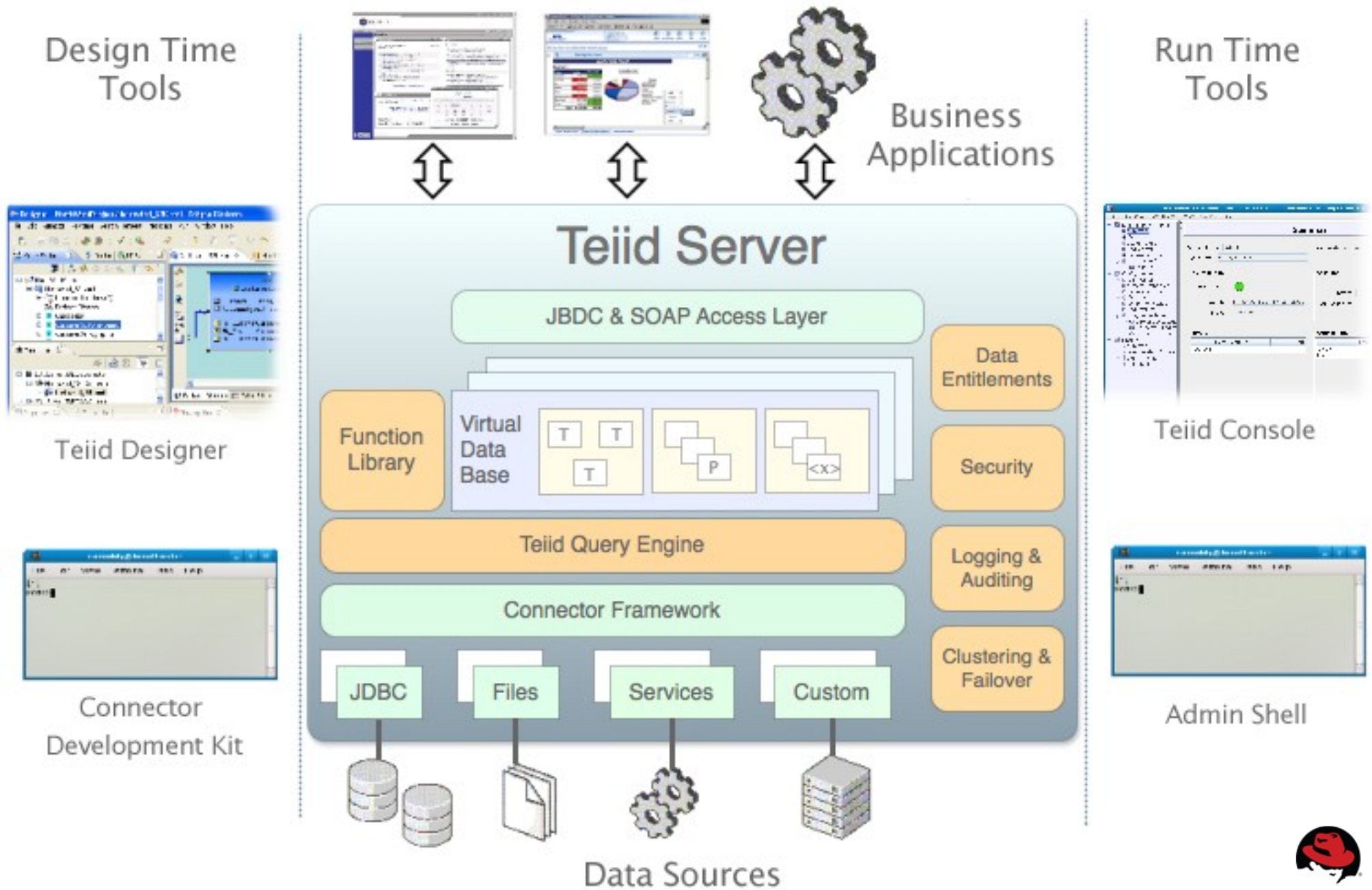


- Data not fresh
- Costly – additional licenses
- More copies of data = more silos
- Lack of agility





Data Services Platform Architecture





PERFORMANCE OPTIMIZATION

- ▶ PLAY BETTER, HARDER AND STRONGER
- ▶ EXTEND YOUR CAREER
- ▶ PREVENT INJURIES

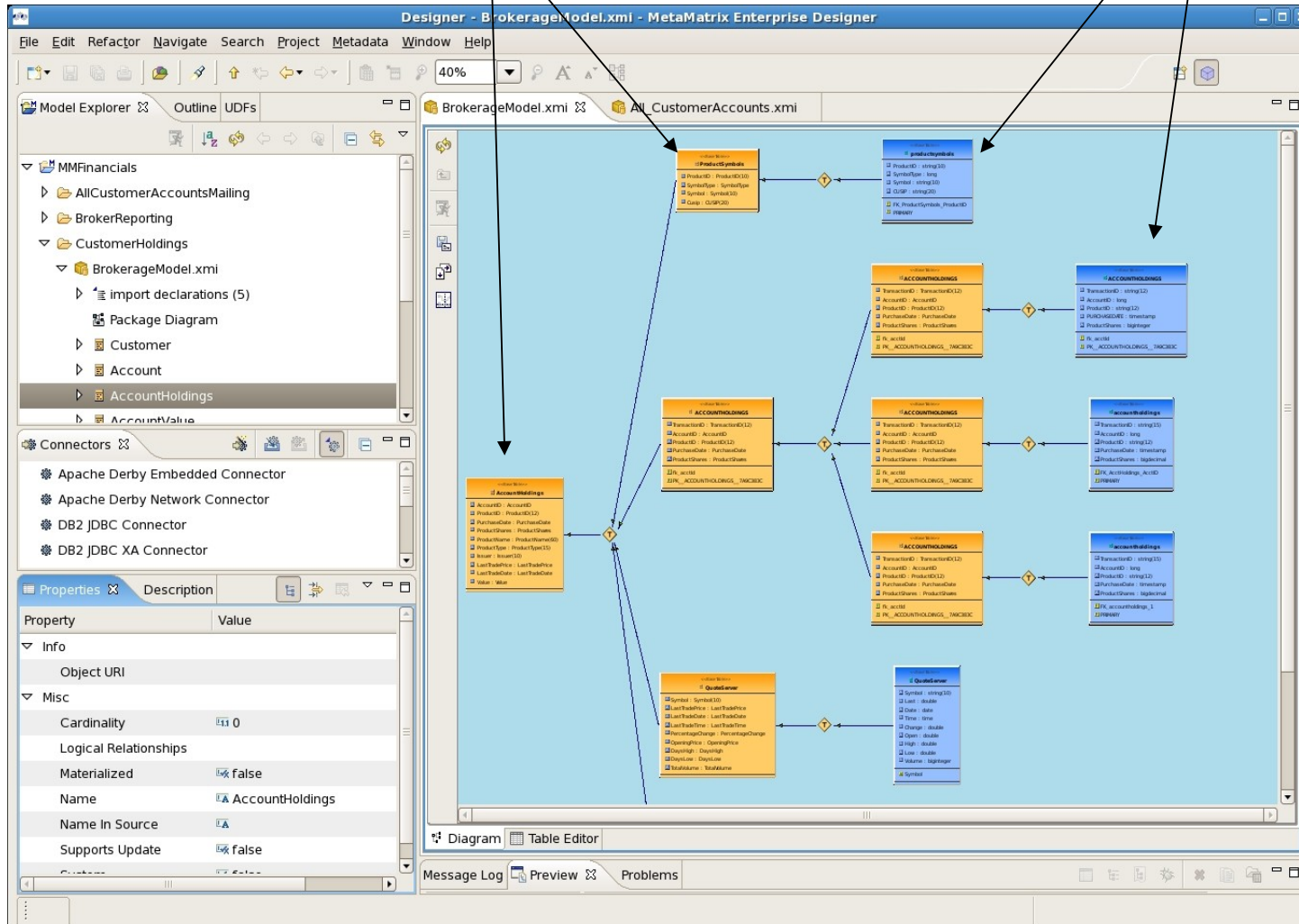


Designer Tooling

Logical Models

Physical Models representing

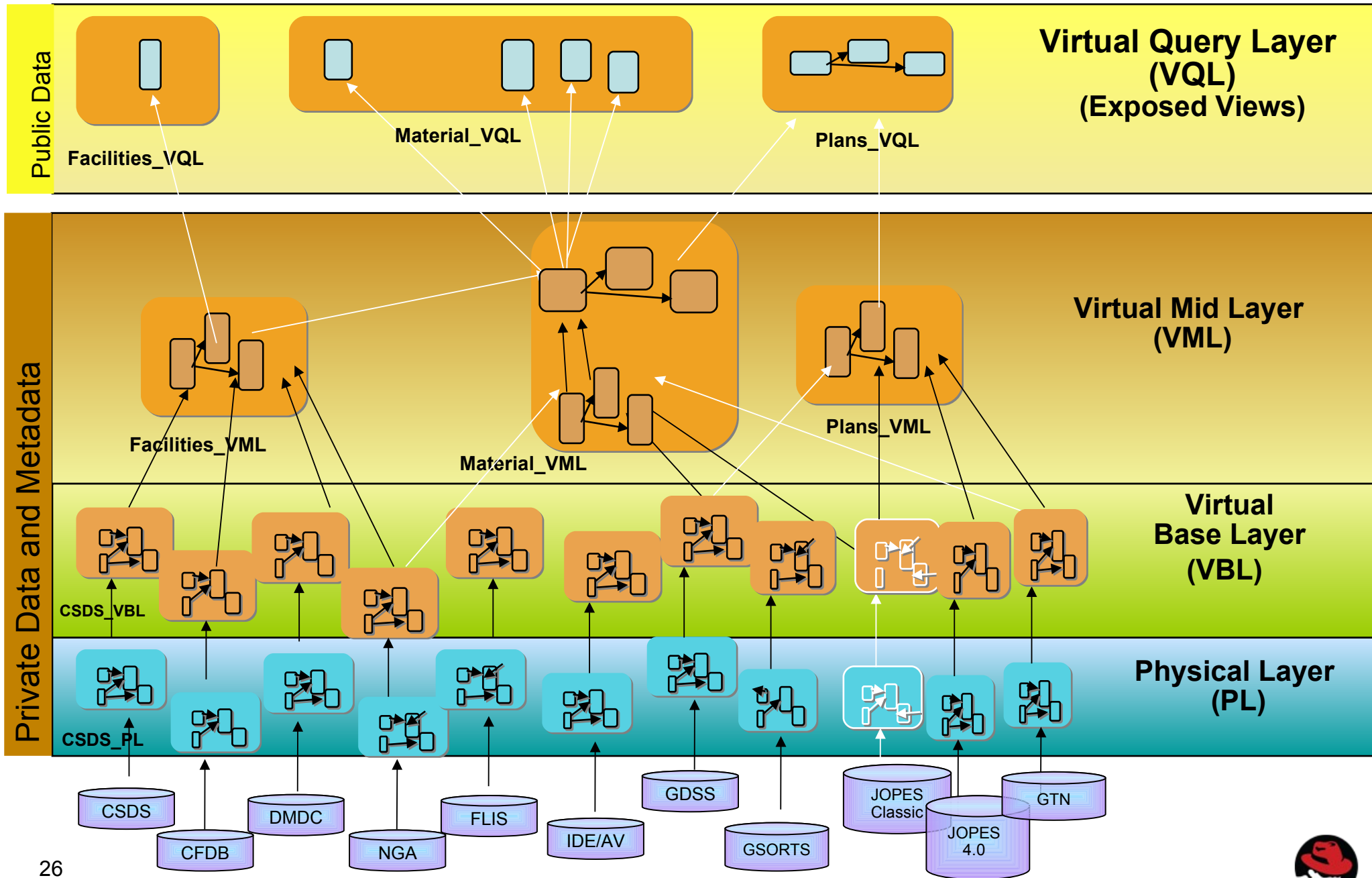
actual data sources



- Shows structural transformations
- Defines transformations with
 - Selects
 - Joins
 - Criteria
 - Functions
 - Unions
 - User Defined



Structured Data Services



Teiid Common Use Cases

Service Oriented Architecture

- Federate/transform data efficiently use by higher-level services
- Insulate business processes from data access details

Business Intelligence, Operational Analytics, Reporting

- Consolidated financial reports/dashboards/KPIs
- Virtual data marts

Information Consolidation, Reference Data Management

- Single/360 view of Customer
- Single/360 view of Supplier
- Single/360 view of Employee

Regulatory Compliance

- Provide common security, central access and auditing of data
- VISA PCI, Sarbanes Oxley, Basel II, HIPAA



jtosi@redhat.com
@joeltosi



Questions?

On to designer...

Give it a try – easy ways to start

Replace a data source with Teiid, update Hibernate / JDBC connection

Add another datasource, do a join and maybe set some defaults

Apply some security

Add a different datasource (file, web service)

Start interacting with Teiid through different interfaces – Services, ODBC

Explore, learn, give feedback!



Thanks!

Check it out:

<http://www.jboss.org/drools>

<http://www.jboss.org/teiid>

jtos@redhat.com

@joeltosi

